



New Luxury Custom Homes  
73 Homesites



Coming to Las Colinas... a new development of upscale luxury custom homes on 22 acres located at 7500 Las Colinas Blvd. AVADENE will be a gated community with 73 custom homes by Alexander Hunt Distinct Homes.

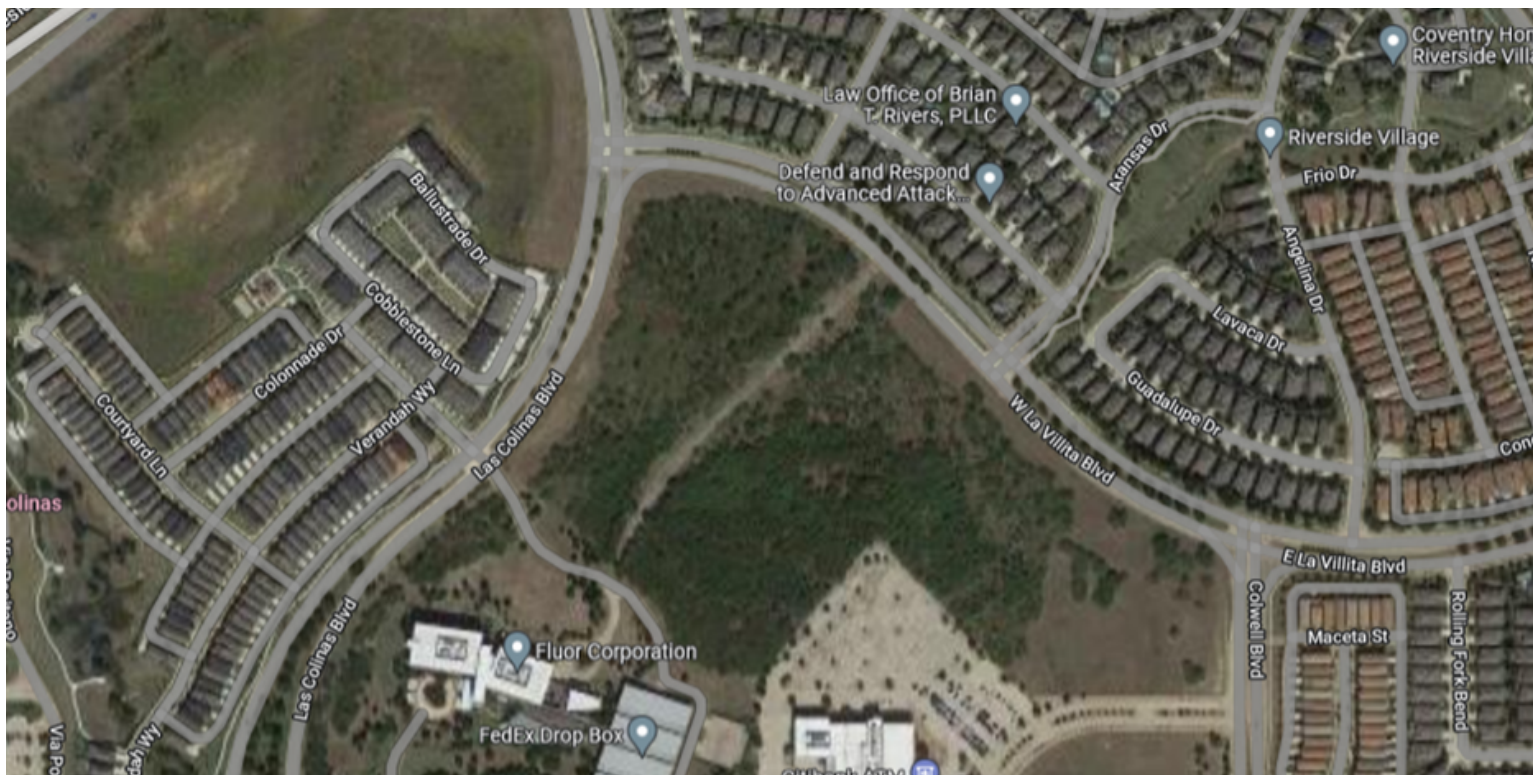
## Avadene in Las Colinas

Number of Lots: 73  
Price of Lots: \$375,000 to \$500,000  
Lot Size Range: 7,500 to 12,000 sq. ft.  
Price of Homes: \$1,700,000 to \$2,200,000+  
Average Size of Homes: 4,400 to 5,100+ sq. ft.  
Size of Development: 22 Acres  
Gated: Yes  
HOA: Yes  
HOA Dues: TBD

Convenient access to vibrant retail centers featuring shopping, dining, entertainment, and world-class outdoor amenities. Just to name a few....

- Champion Trails with 16.9 miles of walking trails
- Paws Colinas Dog Park, and Bird's Fort Trail Dog Park
- Las Colinas Country Club, and The Sports Club at Las Colinas
- Toyota Music Factory, and Water Street Development
- Diverse employment hubs with a multitude of local lifestyle amenities
- 9 miles from DFW International Airport
- 12 miles from Dallas Love Field Airport
- Easy commute to downtown Dallas and North Dallas
- Quick access to major highways 114, 161, and 635





The development is 22 acres with existing residential developments to the North and West.





Site Plan with 73 Lots





Gated Entry







50x150

Lot Sizes

60x150

65x150





5' side and rear yard setbacks

The C shape house is designed to create a private courtyard for your personal outdoor living space. Grilling, play area, swimming pool, putting green. Dream away because you will enjoy the view of your backyard from all around the home.



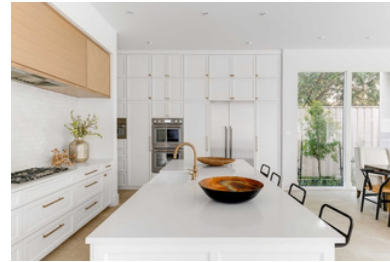
8' sidewalks on one side to incorporate a park like walkway trail around the neighborhood

# EXAMPLES OF HOMES TO BE BUILT IN AVADENE

## EXTERIOR ELEVATIONS



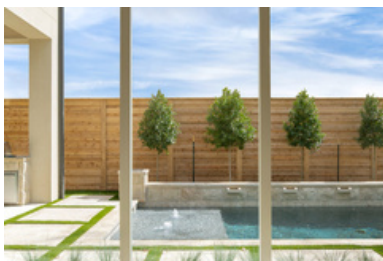
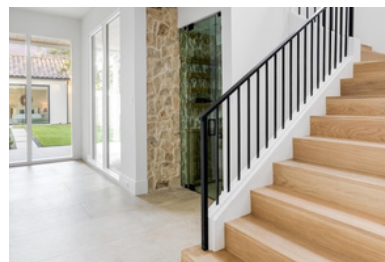
## INTERIOR FINISHES



## OUTDOOR LIVING









**For Additional Information:**

**Phone:** (469) 610-1212

**Email:** [Michelle@Avadene.com](mailto:Michelle@Avadene.com)

